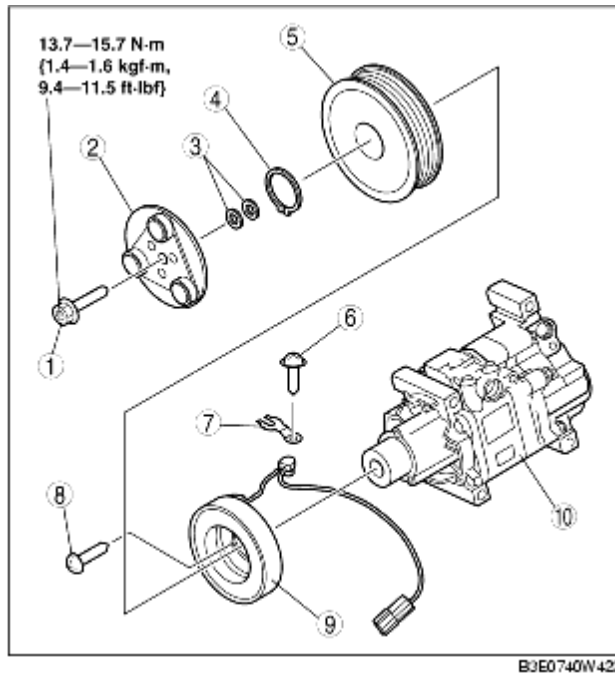


MAGNETIC CLUTCH DISASSEMBLY/ASSEMBLY [Z6, ZJ]

B3E074061010W01

1. Disassemble in the order indicated in the table.



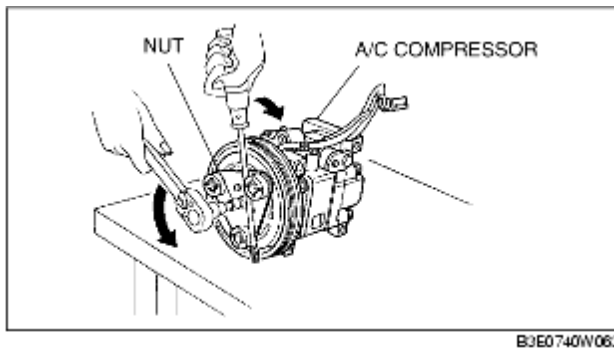
1	Bolt (See Bolt Removal/Installation Note.)
2	Pressure plate
3	Shim
4	Snap ring (See Snap Ring Installation Note.)
5	A/C compressor pulley
6	Screw (See Screw Installation Note.)
7	Clamp (See Clamp Installation Note.)
8	Screw (See Screw Installation Note.)
9	Stator and thermal protector (See Stator and Thermal Protector Removal Note.) (See Stator and Thermal Protector Installation Note.)
10	A/C compressor body

2. Assemble in the reverse order of disassembly.

3. Adjust the magnetic clutch clearance. (See [MAGNETIC CLUTCH ADJUSTMENT.](#))

Bolt Removal/Installation Note

1. When removing or installing the bolt, hold the pressure plate in place as shown in the figure.



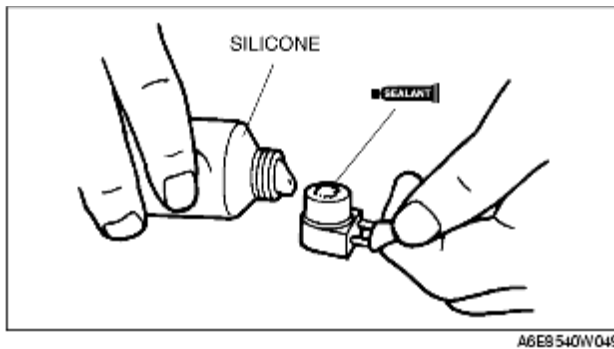
2. When installing a new A/C compressor body, replace the recommended bolt.

Stator and Thermal Protector Removal Note

1. After removing the stator and thermal protector, completely remove the silicone adhering to the A/C compressor side.

Stator and Thermal Protector Installation Note

1. Apply **approx. 1 g {0.04 oz}** of silicone (Shin-Etsu Silicone KE-347W or similar) to the contact surface of the thermal protector, then thoroughly install it onto the A/C compressor, leaving no gaps.



Screw Installation Note

1. When installing a new stator and thermal protector, replace the screw.

Clamp Installation Note

1. When installing a new stator and thermal protector, replace the clamp.

Snap Ring Installation Note

1. When installing a new pressure plate, A/C compressor pulley, stator, or A/C compressor body, replace the snap ring.

